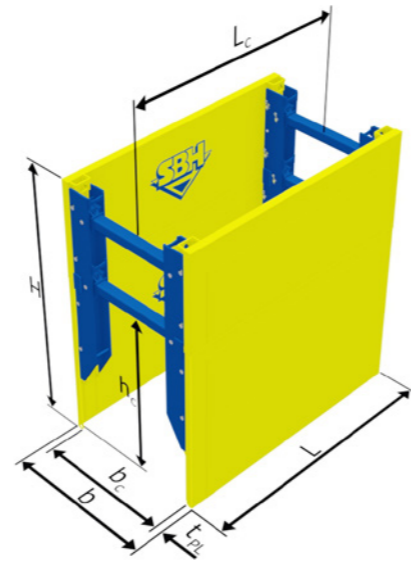


## STANDARD BOX WITH TRANSFORMATION PROFILE RIGID STRUT

SBH's transformation profile combines base and top plates to form a shoring box whose pipe clearance height is roughly the same as the base plate height.

- ▶ Achieve greater pipe clearance heights without having to switch to other types of shoring
- ▶ No special transport required, as the box is only assembled to a finished shoring box at the construction site
- ▶ Support achieved by means of sturdy 4-squared struts
- ▶ Integrated spring spindle holders enable the shoring box to be lowered at alternating sides



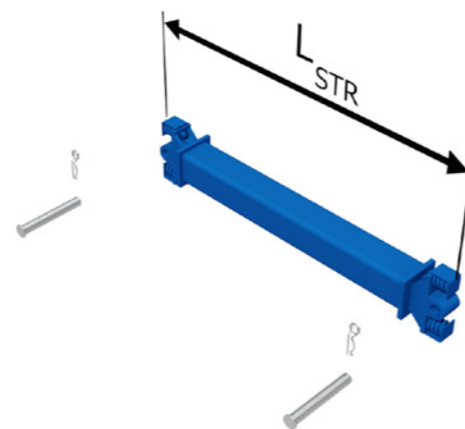
### PLATES

Plate length L [m]	Plate height H [m]	Thick- ness t <sub>pl</sub> [mm]	Pipe clearance length L <sub>c</sub> [m]	Pipe clearance height h <sub>c</sub> [m]	Permissible earth pressure [kN/m <sup>2</sup> ]	Limit state design load e <sub>d</sub> / Characteristic system resistance R <sub>k</sub> [kN/m <sup>2</sup> ]	Weight b <sub>c</sub> = 2.33 m [kg/box]
3.00	2.40 + 1.40 / 2.60 + 1.40	107.00	2.60	2.30 / 2.51	57.0 / 47.6	85.5 / 71.4	5220.0 / 5350.0
3.50	2.40 + 1.40 / 2.60 + 1.40		3.10	2.30 / 2.51	48.9 / 40.8	73.4 / 61.2	5590.0 / 5730.0
4.00	2.40 + 1.40 / 2.60 + 1.40		3.60	2.30 / 2.51	42.8 / 35.7	64.2 / 53.6	5960.0 / 6120.0
4.50	2.40 + 1.40 / 2.60 + 1.40		4.10	2.30 / 2.51	38.0 / 31.8	57.0 / 47.7	6850.0 / 7040.0
5.00	2.40 + 1.40 / 2.60 + 1.40		4.60	2.30 / 2.51	34.2 / 28.6	51.3 / 42.9	7280.0 / 7480.0
5.50	2.40 + 1.40 / 2.60 + 1.40		5.10	2.30 / 2.51	29.4 / 26.0	44.1 / 39.0	7700.0 / 7920.0
6.00	2.40 + 1.40 / 2.60 + 1.40	5.60	2.30 / 2.51	24.5 / 23.8	36.8 / 35.7	8120.0 / 8360.0	

Other lengths or custom variants upon request.

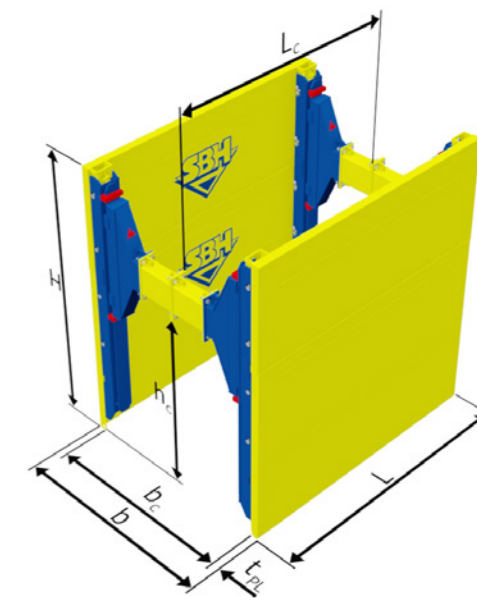
### RIGID STRUTS pipes 150.00 x 150.00 mm

Strut length L <sub>STR</sub> [m]	Working width between Plates Transformation profiles [m]	Permitted compressive force [kN]	Weight [kg]
2.00	2.33	600.0	129.0
2.50	2.83	600.0	153.0
3.00	3.33	600.0	176.0
3.50	3.83	550.0	200.0
4.00	4.33	500.0	223.0
4.50	4.83	450.0	247.0
5.00	5.33	400.0	270.0
5.50	5.83	350.0	294.0
6.00	6.33	300.0	317.0



## STANDARD BOX WITH TRANSFORMATION PROFILE ROLLING STRUTS

- ▶ The rolling struts enable simultaneous lowering and lifting of the individual shoring plates
- ▶ Reduces tractive forces when removing
- ▶ Easy expansion thanks to distance pieces
- ▶ Uses the rolling struts from the 780 series Rolling Strut Box
- ▶ Flexible pipe clearance positioning



### PLATES

Plate length L [m]	Plate height H [m]	Thick- ness t <sub>pl</sub> [mm]	Pipe clearance length L <sub>c</sub> [m]	Pipe clearance height h <sub>c</sub> [m]	Permissible earth pressure [kN/m <sup>2</sup> ]	Limit state design load e <sub>d</sub> / Characteristic system resistance R <sub>k</sub> [kN/m <sup>2</sup> ]	Weight b <sub>c</sub> = 2.45 m [kg/box]
3.00	2.40 + 1.40 / 2.60 + 1.40	107.00	2.50	2.32 / 2.53	40.7 / 36.0	61.1 / 54.0	531.0 / 5430.0
3.50	2.40 + 1.40 / 2.60 + 1.40		3.00	2.32 / 2.53	34.9 / 30.8	52.4 / 46.2	5680.0 / 5820.0
4.00	2.40 + 1.40 / 2.60 + 1.40		3.50	2.32 / 2.53	30.5 / 27.0	45.8 / 40.5	6050.0 / 6210.0
4.50	2.40 + 1.40 / 2.60 + 1.40		4.00	2.32 / 2.53	27.1 / 24.0	40.7 / 36.0	6940.0 / 7120.0
5.00	2.40 + 1.40 / 2.60 + 1.40		4.50	2.32 / 2.53	24.6 / 21.6	36.9 / 32.4	7360.0 / 7560.0
5.50	2.40 + 1.40 / 2.60 + 1.40		5.00	2.32 / 2.53	22.2 / 19.6	33.3 / 29.4	7780.0 / 8000.0
6.00	2.40 + 1.40 / 2.60 + 1.40	5.50	2.32 / 2.53	20.4 / 18.0	30.6 / 27.0	8210.0 / 8440.0	

Other lengths or custom variants upon request.

### ROLLING STRUTS (RS)

RS length L <sub>RS</sub> [m]	RS width b <sub>RS</sub> [m]	Min working width b <sub>c</sub> [m]	Min trench width b [m]	Flange di- mensions b <sub>f</sub> x h <sub>f</sub> [mm]	Permissible forces [kN]	Weight per RS pair [kg]
1.50	0.50	1.45	1.67	220.00 x 560.00	-112.0 bis 242.0	360.0

